

JIBBI U-1570

PATENT PENDING
ALMACRAWLER 



U **ULTRA**
L **LIGHT**
CRAWLER RANGE

PRO ACTIVE LEVELLING

DYNAMIC LEVELLING

CRAWLER TELESCOPIC BOOM

ALMACRAWLER 
ALMAC-PACIFIC.COM.AU

MyAlmac

CONTROL PANEL



Machine settings via remote control panel

Ultrasonic anti-collision system

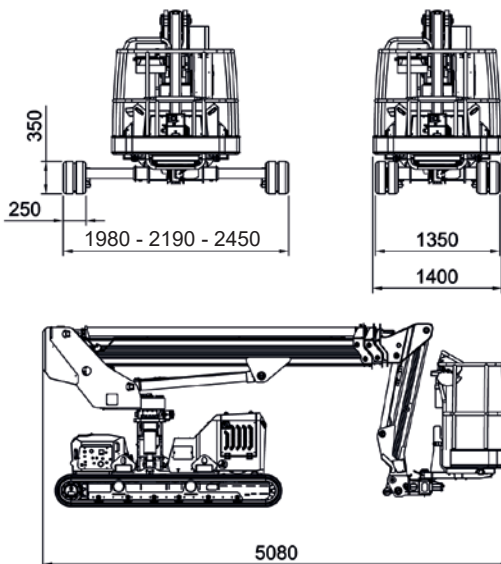
Max basket capacity 250 kg

Ultralight aluminium telescopic boom

Integrated Drive System

Using a single joystick

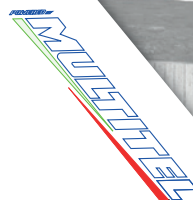
Cable remote console by AUTEC



Bi-leveling up to 22°

ULTRA LIGHT

CRAWLER RANGE



Resulting from the partnership between Almacrawler and Multitel Pagliero, the Ultralight Series represents the perfect combination of innovation, coupled with Almacrawler's traditionally advanced features, all in a single machine.

The Jibbi U-1570 EVO/LTH is a lightweight boom lift weighing less than *2.9-tonnes. Thanks to dynamic and pro-active levelling technology, this high-performance machine can navigate uneven ground and/or steep slopes of up to 22°. This technology has enabled the Jibbi U-1570 range to operate in areas that are inaccessible by traditional booms. Combined with the innovative and patented Almacrawler bi-levelling undercarriage, this self-propelled tracked machine boasts an impressive working height of over 15 meters. With a load capacity in the basket of up to 250kg, it is undoubtedly one of the most versatile and lightweight crawler booms available in Australia.

Our sustainably sourced lithium batteries are utilised in the LTH version, which houses an impressive 300Ah-48V battery pack with a 4kW DC output, making this model quiet, efficient and ideal for both indoor and outdoor applications.

*Diesel version

JIBBI U-1570

Self-propelled crawler with an
Ultralight Telescopic boom of 2.9
tonnes and 15.4 metres high.



Technical data

| | EVO | LTH |
|-------------------------------|---------------|----------|
| Max working height | 15.40 m | |
| Max height basket floor | 13.40 m | |
| Max moving height | 9.50 m | |
| Max outreach (load 80 kg) | 9.65 m | |
| Max outreach (load 140 kg) | 8.23 m | |
| Max outreach (load 200 kg) | 7.33 m | |
| Max outreach (load 250 kg) | 6.83 m | |
| Rotation angle | +/-110° | |
| Basket size | 1.4 x 0.7 m | |
| Basket rotation angle | +/- 90° | |
| Max basket capacity | 250 kg (2 p.) | |
| Length in stowed position | 4.92 m | |
| Min width in stowed position | 1.35 m | |
| Med working width | 1.98 m | |
| Max working width | 2.45 m | |
| Min height in stowed position | 1.99 m | |
| Longitudinal leveling | +/- 15° | |
| Lateral leveling | +/- 15° | |
| Max gradeability | 25° | |
| Max side gradeability | 25° | |
| Drive speed (fast) | 2.5 km/h | 2.0 km/h |
| Security speed | 0.4 km/h | |

Weights

| | | |
|----------------------------------|------------|------------|
| Traffic load (max working width) | 3.40 kN/m2 | 3.50 kN/m2 |
| Total weight | ~ 2895 kg | ~ 2950 kg |

Power

| | | |
|--|-----------------------------|---------|
| 3TNM68 -AS Yanmar engine (diesel) | 14 kW - 19.2 Hp @3600rpm | No |
| Lithium battery pack 300Ah-48V | No | DC 4 kW |
| N° 2 battery charger 20Ah-48V (Re-charging time) | No | 6 h |

Extras - On Demand

| |
|--|
| Electric pump 220V-2.2KW / 50Hz |
| Radio remote control with rechargeable battery |
| Arctic lubricant for cold climate |
| Ultrasonic Anti-collision System |

JIBBI U-1570

15.4m

MAX W.H.

250kg

CAPACITY

19.2Hp

POWER

$\pm 15^\circ$

LONG. LEVEL.

2.5km/h

SPEED

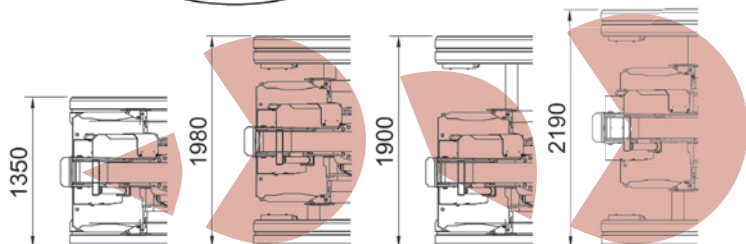
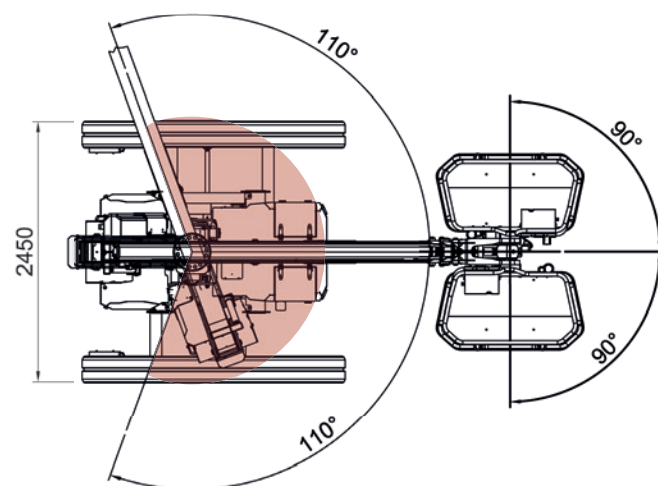
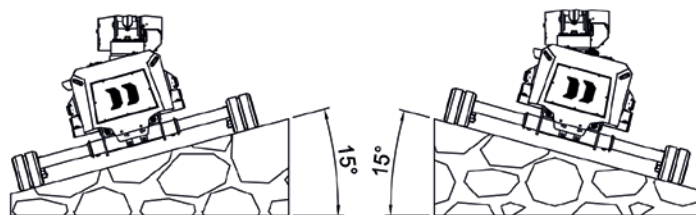
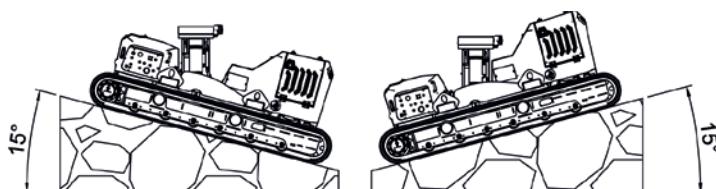
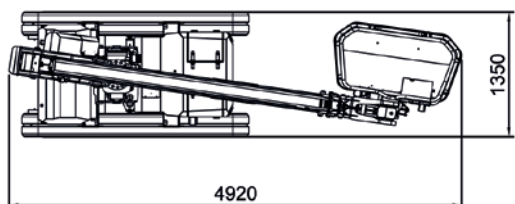
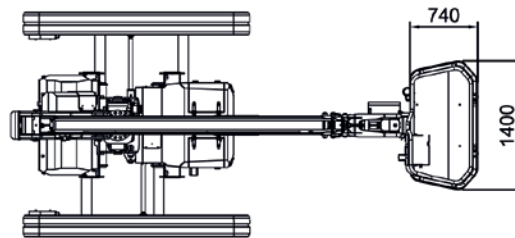
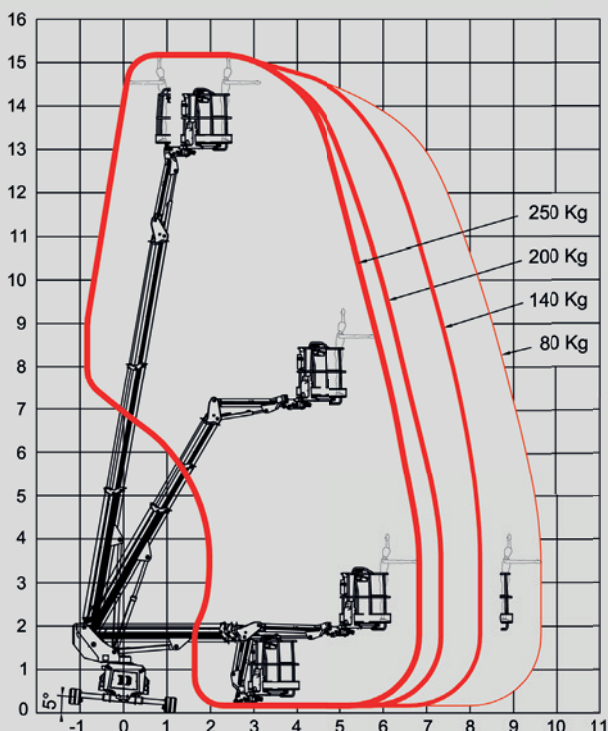
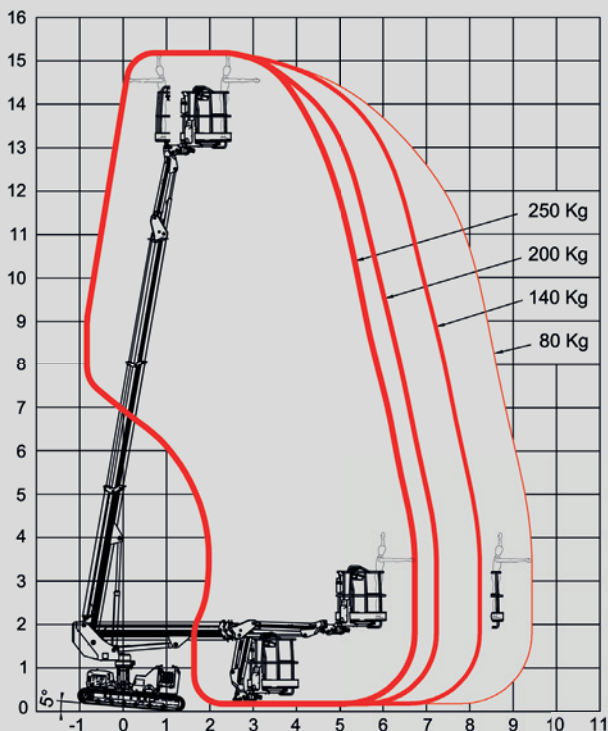
$\pm 15^\circ$

LATER. LEVEL.

Dynamic Working Performance

Progressive outreach control for effective working conditions (basket capacity, track width, ground inclination).

- 80 kg
- 140 kg
- 200 kg
- 250 kg



ALMACRAWLER 

ALMAC-PACIFIC.COM.AU

Almac Pacific Pty Ltd
1/28 Corporate Terrace, PAKENHAM VIC 3810

sales@almac-pacific.com.au

SALES 0402 982 999 | SERVICE 0432 256 711 | PARTS 1300 CRAWLR (272 957)

ALL DATA REPORTED IN THIS CATALOGUE ARE NOT BINDING. ALMAC SRL RESERVES THE RIGHT TO CHANGE SPECIFICATIONS WITHOUT PRIOR NOTICE.