

JIBBI

1670 LTH

PATENT PENDING



PRO ACTIVE LEVELLING

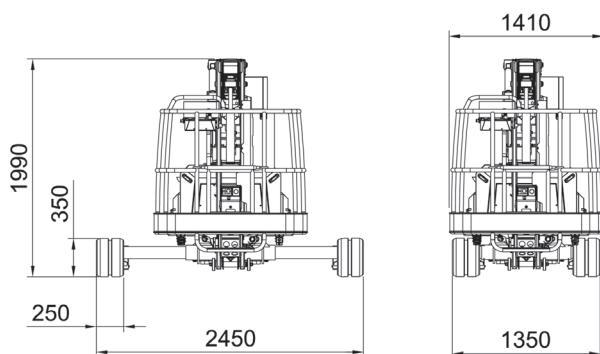
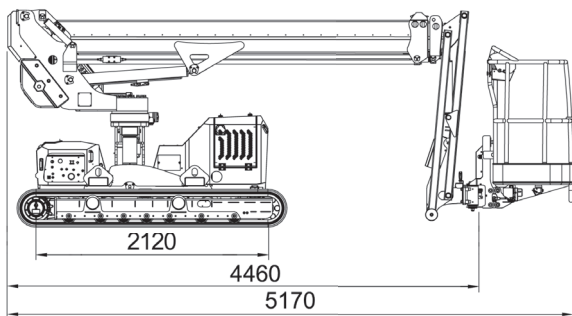
DYNAMIC LEVELLING

CRAWLER TELESCOPIC BOOM

ALMACRAWLER 
ALMAC-PACIFIC.COM.AU

JIBBI 1670 LTH

16 mt crawler telescopic boom
with lithium battery.



Integrated Drive System
Using single joystick



Cable remote console by AUTEC

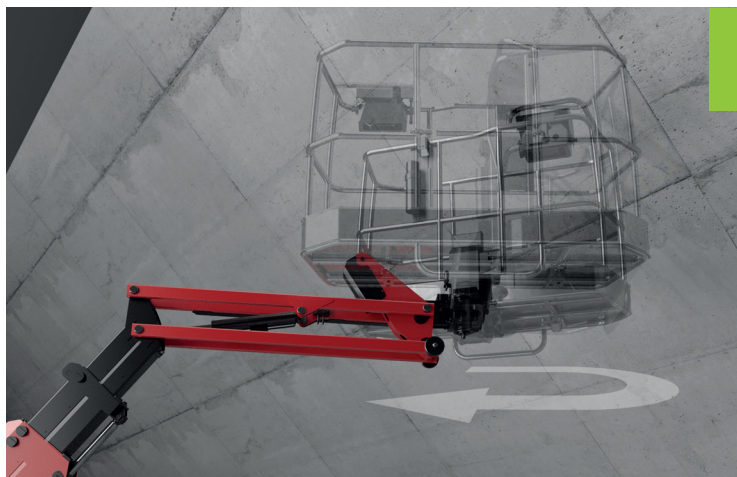
MyAlmac
CONTROL PANEL



Machine settings remote control panel

Basket rotation

+/- 70°



Slewing ring rotation

+/- 110°



Resizable undercarriage

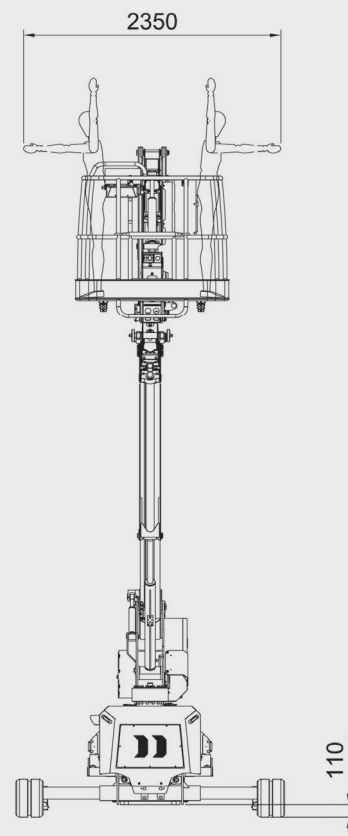
1.35 / 1.90 / 2.45 mt



Technical data

JIBBI 1670 LTH

Max working height	16,00 m
Max height basket floor	14,00 m
Moving height	9,80 m
Max outreach (load 80 kg)	8,50 m
Max outreach (load 140 kg)	7,70 m
Max outreach (load 230 kg)	6,70 m
Rotation angle	+/- 110°
Basket size	1,40 x 0,70 m
Basket rotation angle	+/- 70°
Max basket capacity	230 kg
Length in stowed position (with detached basket)	5,10 (4,40) m
Min width in stowed position	1,35 m
Medium working width	1,90 m
Max working width	2,45 m
Min height in stowed position	1,99 m
Longitudinal leveling	+/- 15°
Lateral leveling	+/- 15°
Max gradeability	25°
Max side gradeability	25°
Drive speed (fast)	2,00 km/h
Speed over transport condition	0,40 km/h



Weights

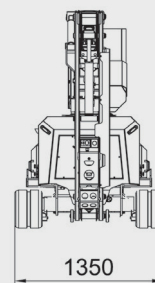
Traffic load (max working width)	3,15 KN/m2
Total weight	3910 kg

Power

Lithium battery pack 300Ah-48V	DC 4 kW
N°2 battery charger 20Ah-48 V	6 h (Re-charging time)

Extras - On Demand

Wide Basket	1,80 x 0,70 m
Non-marking tracks	-
Electric pump 220V-2,2KW / 50Hz (Weight +30 Kg)	-
Radio remote control with rechargeable battery	-
Arctic lubricant for cold climate	-
Winch kit 200 kg	-
Ultrasonic Anti-collision System	-



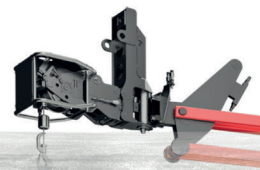
Basket size

Standard
1.4 mt

Optional
1.8 mt



Winch Optional



JIBBI 1670 LTH

- 80 kg
- 140 kg
- 230 kg

16.0m

MAX W.H.

230kg

CAPACITY

4 kW

POWER

$\pm 15^\circ$

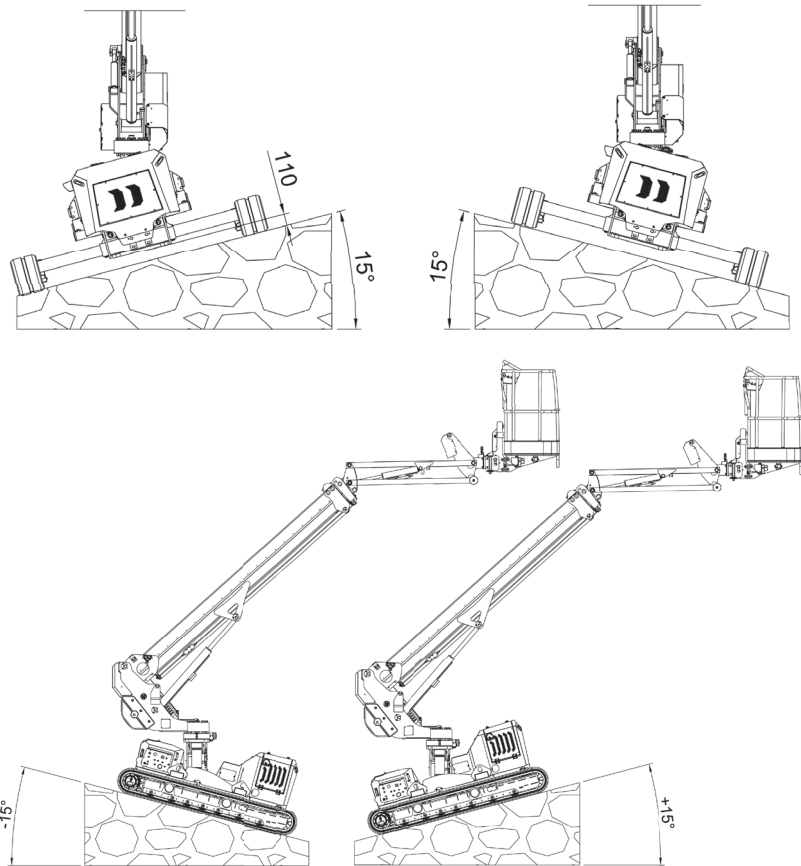
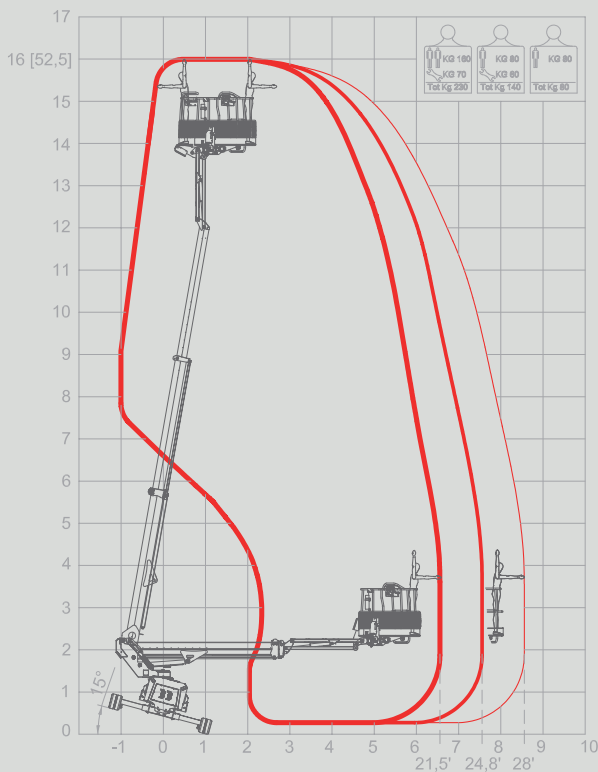
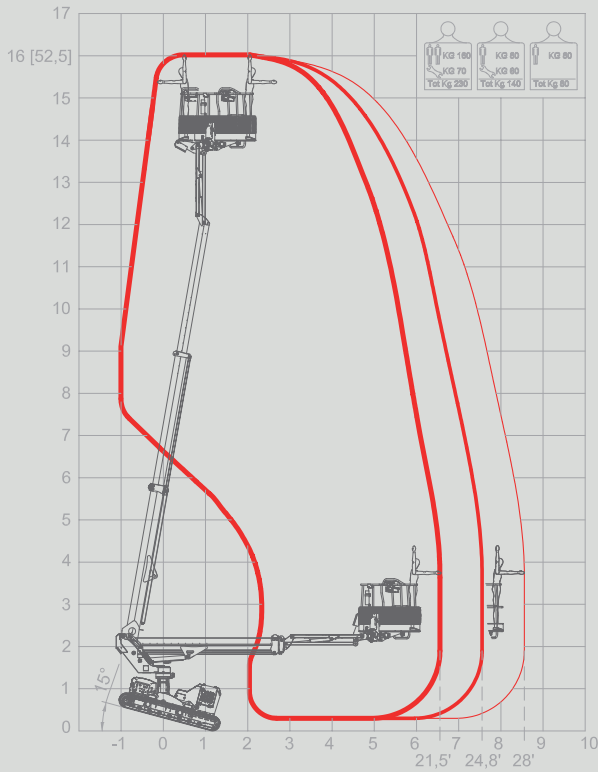
LONG. LEVEL.

2.0 km/h

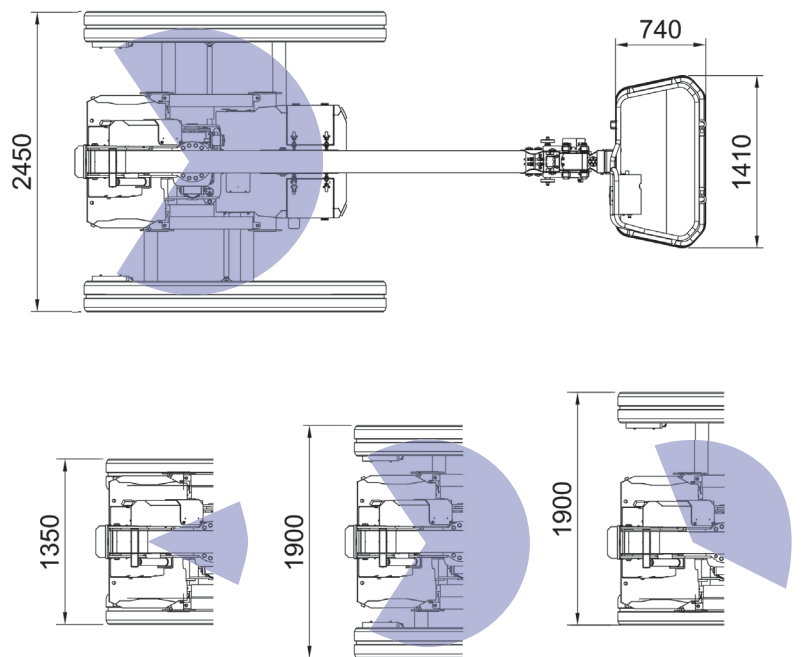
SPEED

$\pm 15^\circ$

LATER. LEVEL.



UNDERCARRIAGE CONFIGURATIONS & WORKING AREAS



Level 10, 68 Pitt Street, SYDNEY, NSW2000
Email info@almac-pacific.com.au

ALMACRAWLER 
ALMAC-PACIFIC.COM.AU

ALL DATA REPORTED IN THIS CATALOGUE ARE NOT BINDING. ALMAC SRL RESERVES THE RIGHT TO CHANGE SPECIFICATIONS WITHOUT PRIOR NOTICE.